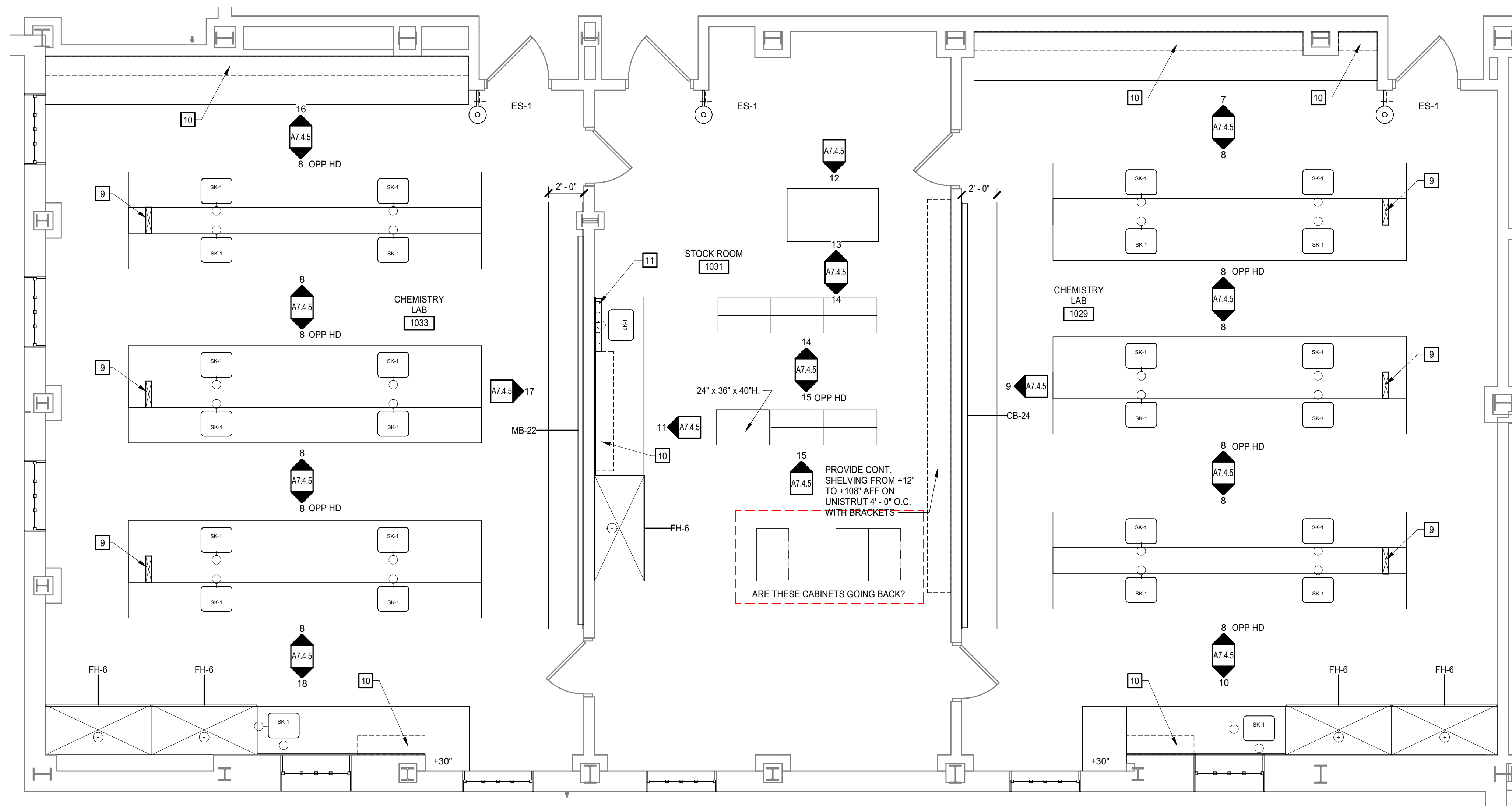
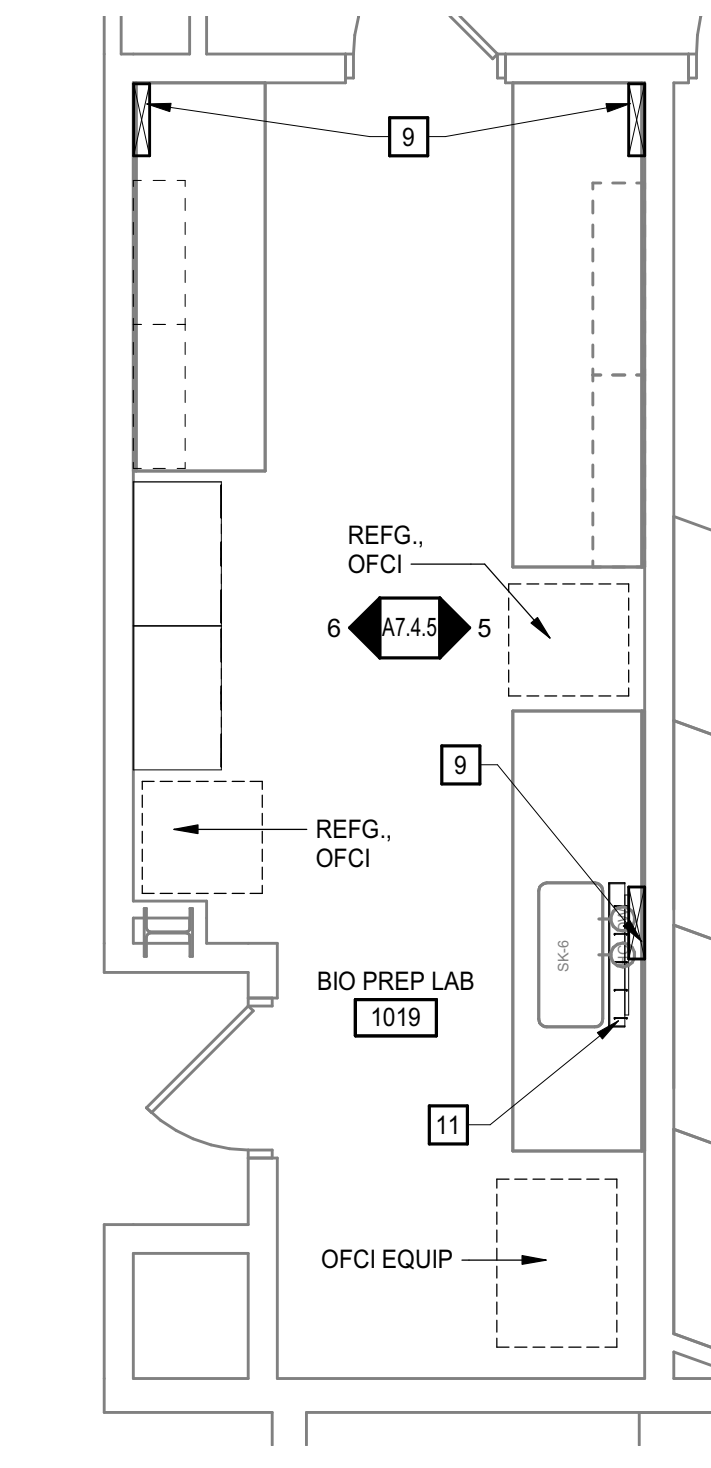


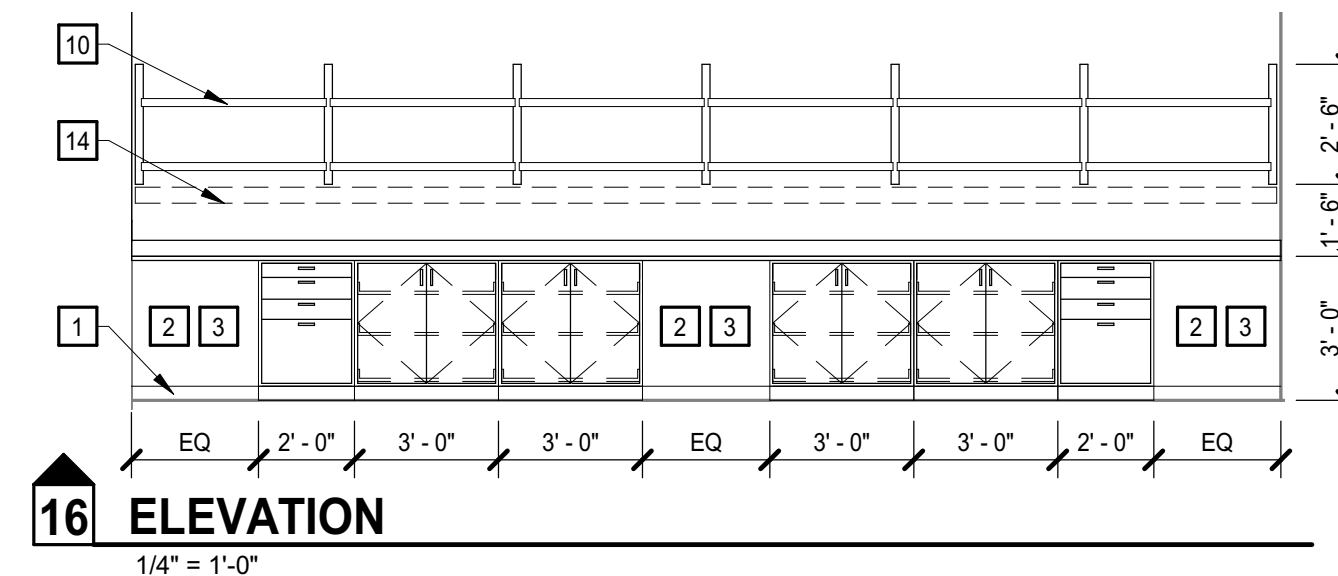
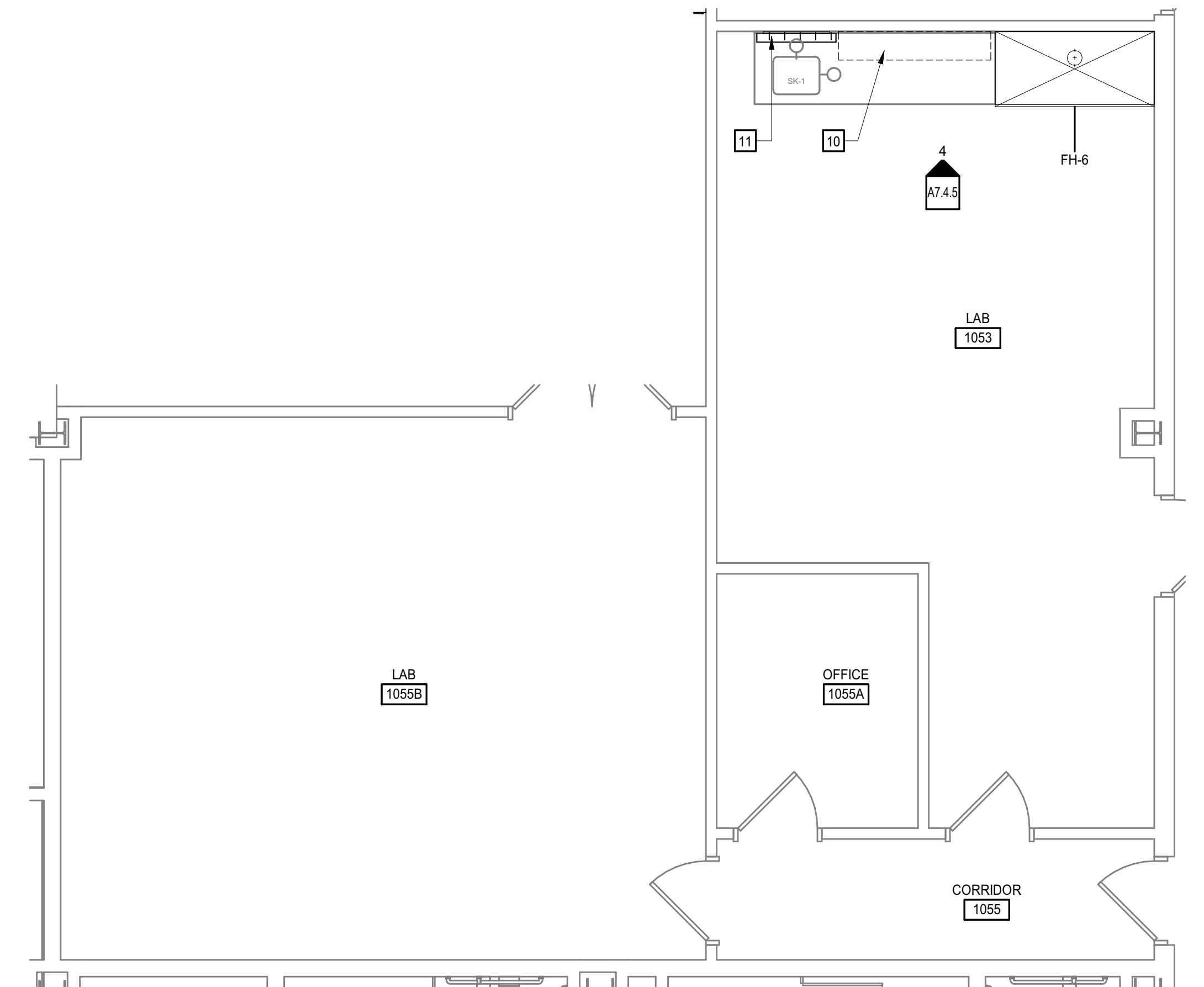
3 ENLARGED LAB PLAN
A2.1.1 A7.4.5 1/4" = 1'-0"



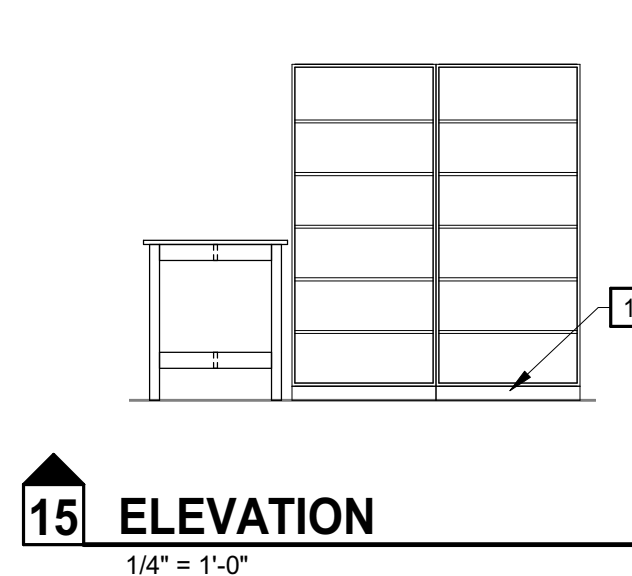
2 ENLARGED LAB PLAN
A2.1.1 A7.4.5 1/4" = 1'-0"



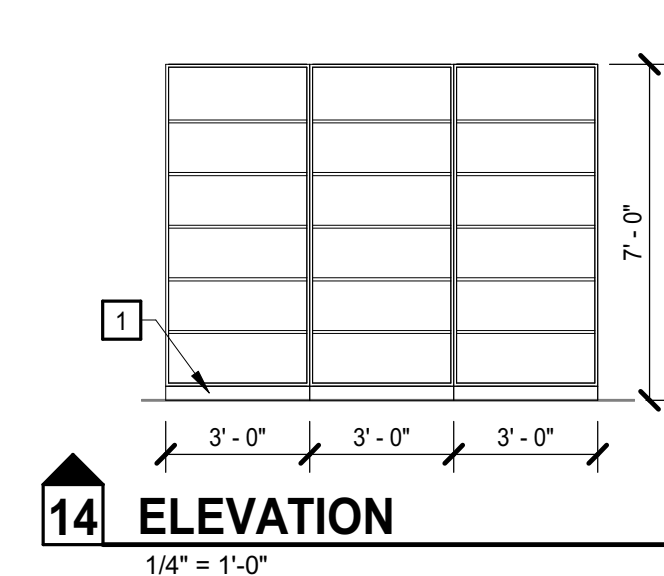
1 ENLARGED LAB PLAN
A7.4.5 1/4" = 1'-0"



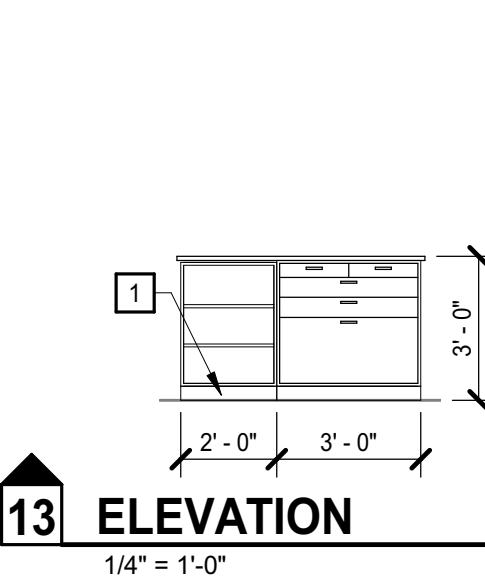
16 ELEVATION
1/4" = 1'-0"



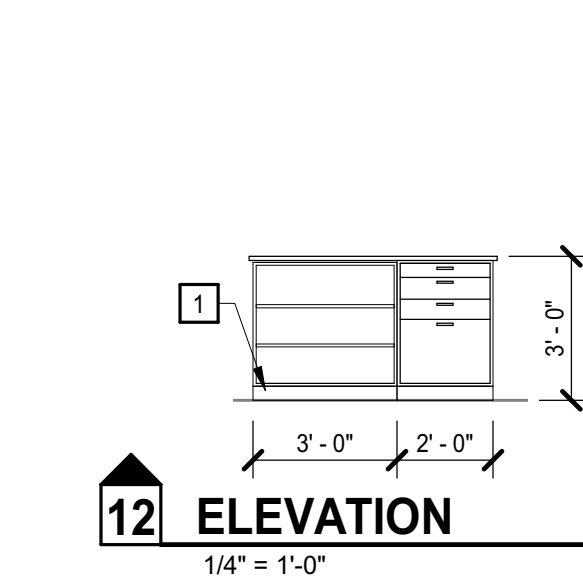
15 ELEVATION
1/4" = 1'-0"



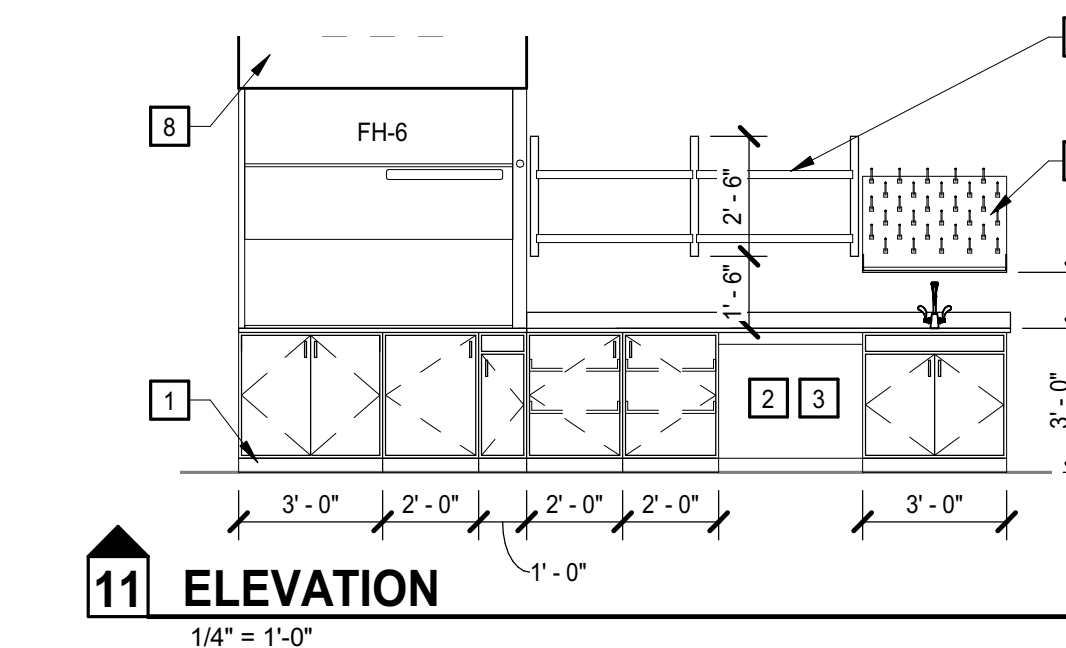
14 ELEVATION
1/4" = 1'-0"



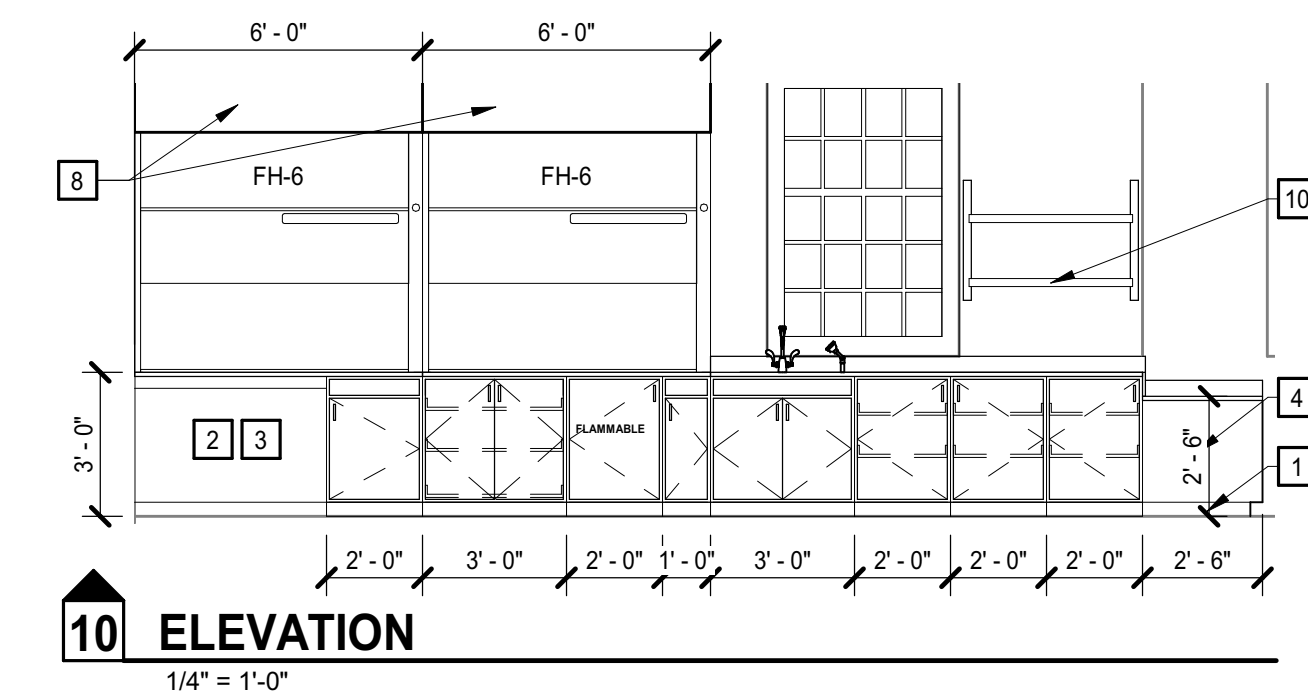
13 ELEVATION
1/4" = 1'-0"



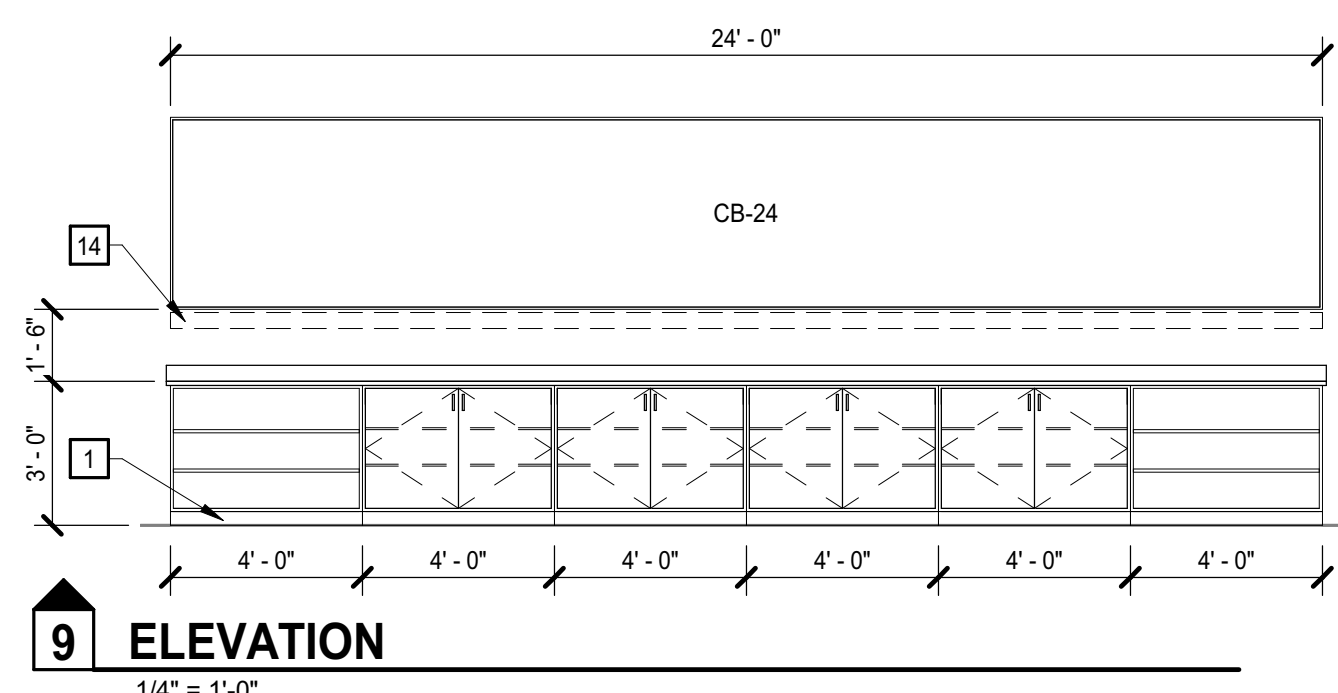
12 ELEVATION
1/4" = 1'-0"



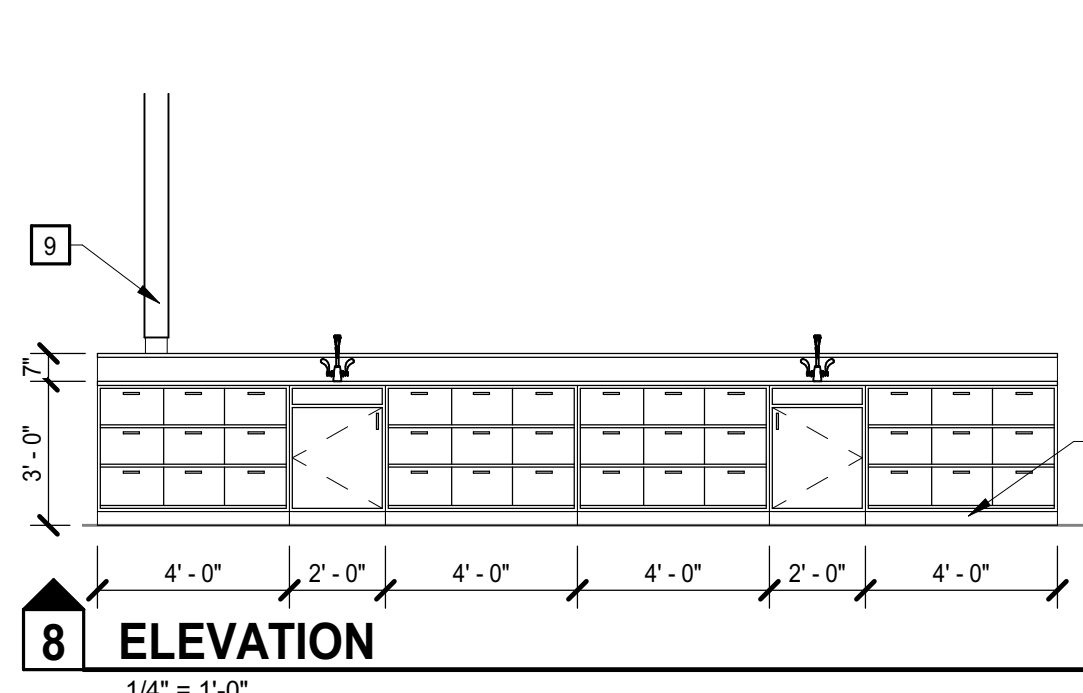
11 ELEVATION
1/4" = 1'-0"



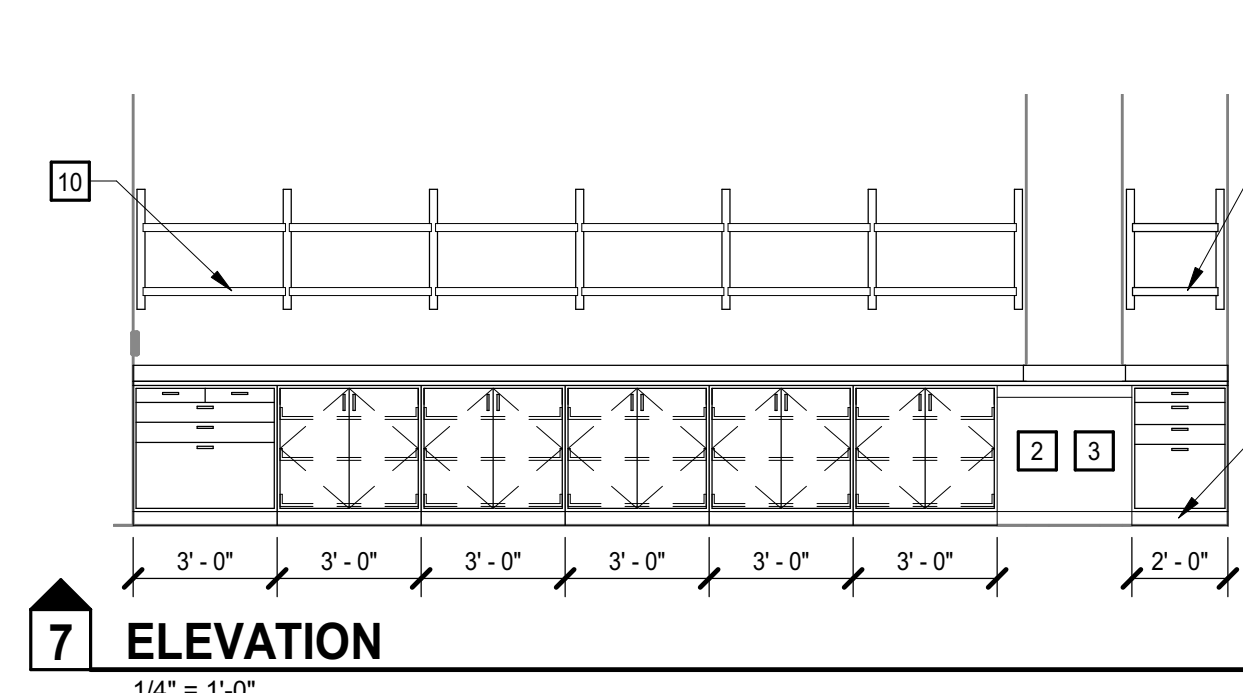
10 ELEVATION
1/4" = 1'-0"



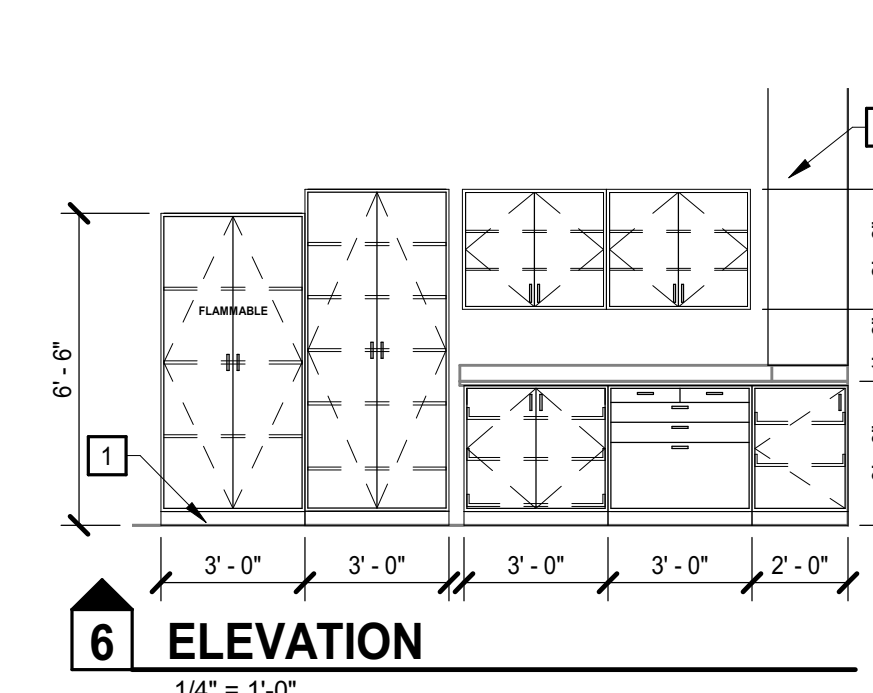
9 ELEVATION
1/4" = 1'-0"



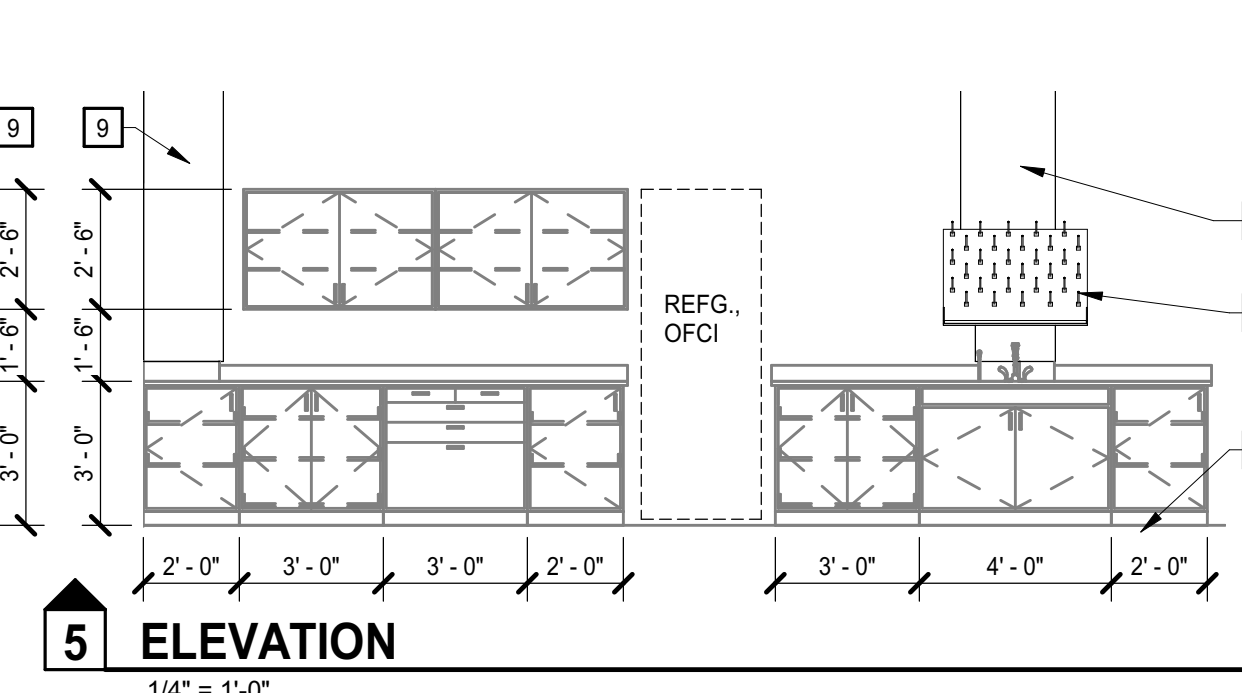
8 ELEVATION
1/4" = 1'-0"



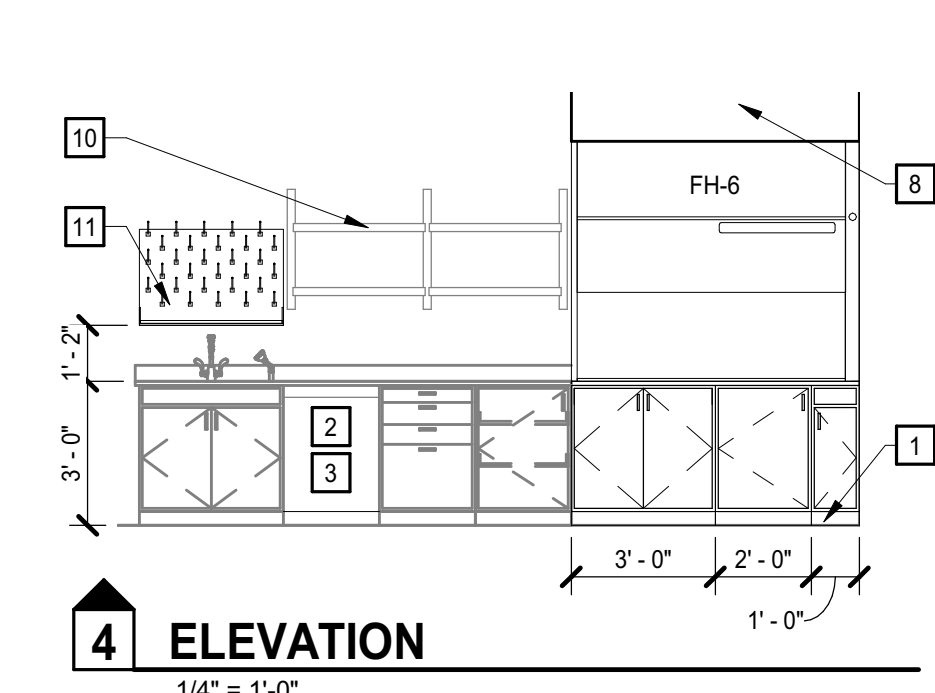
7 ELEVATION
1/4" = 1'-0"



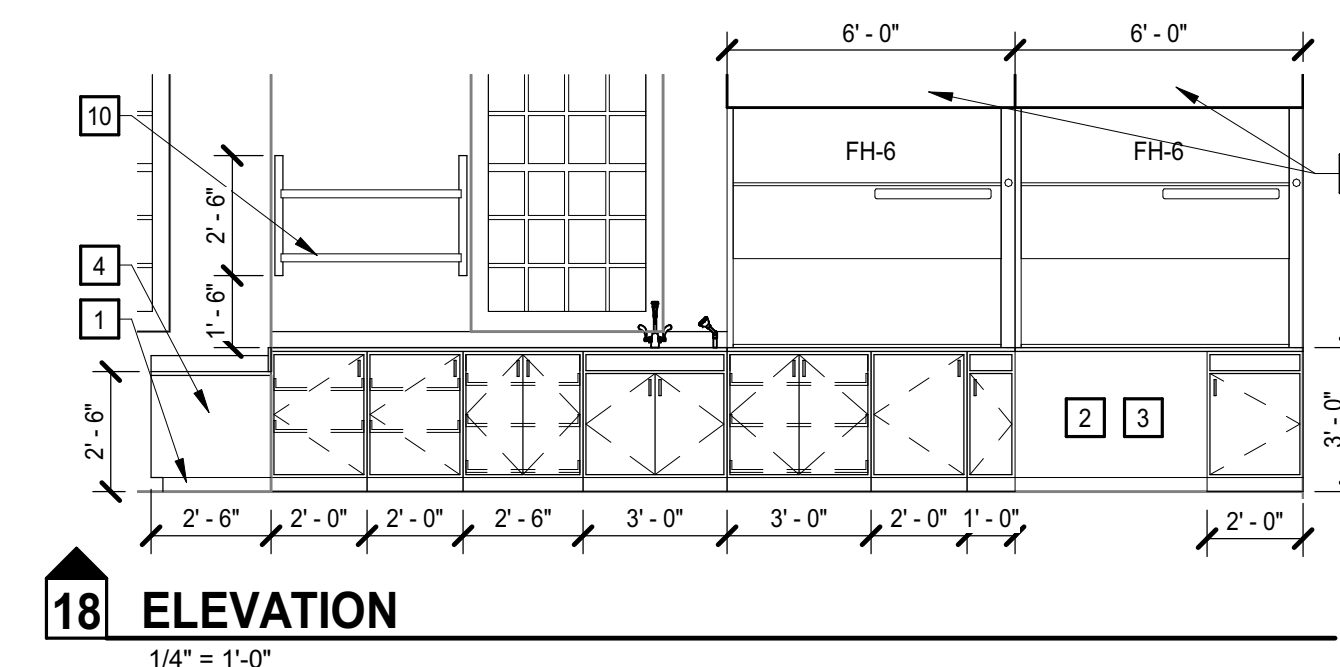
6 ELEVATION
1/4" = 1'-0"



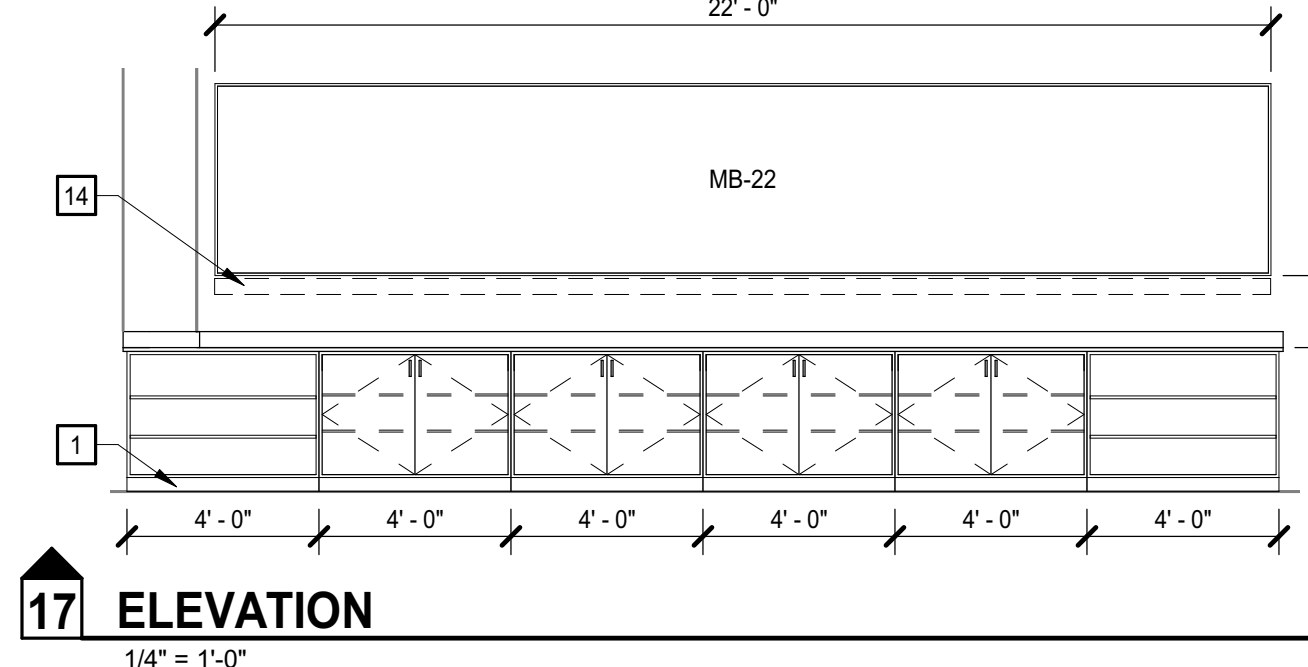
5 ELEVATION
1/4" = 1'-0"



4 ELEVATION
1/4" = 1'-0"



18 ELEVATION
1/4" = 1'-0"



17 ELEVATION
1/4" = 1'-0"

GENERAL NOTES

- A. UNLESS INDICATED OTHERWISE, ALL COUNTERTOPS:
- 3'-0" AFF OR 3'-0" TO TOP OF RIM AT DROP-IN SINKS AND LAVATORIES WHERE OCCURS
 - 2'-0" DEEP
 - BLACK EPOXY RESIN, 1" THICK
 - BACKPLASHES: 4" HIGH AT PERIMETER AND AS NOTED
- B. UNLESS INDICATED OTHERWISE, ALL BASE CABINET(S):
- 22" DEEP NOMINAL
 - TOE KICKS: 4" HIGH AND 3" DEEP
- C. UNLESS INDICATED OTHERWISE, ALL WALL CABINET(S):
- 1'-1" DEEP NOMINAL
 - 2'-6" HIGH
 - TOP AT 7'-0" AFF
- D. PROVIDE SOLID BLOCKING FOR ALL WALL MOUNTED ITEMS
- E. INSTALL RUBBER BASE ON THE BASE OF ALL CASEWORK
- F. BUILT-IN EQUIPMENT: SIZE OPENING (HEIGHT, WIDTH, AND DEPTH) AND ROUGH-IN REQUIREMENTS AS REQUIRED BASED ON APPROVED MANUFACTURER SUBMITTED.
- G. ALL SHELVES: ADJUSTABLE UNLESS INDICATED OTHERWISE
- H. PROVIDE FINISH END PANELS AT ALL EXPOSED CASEWORK ENDS.
- I. LOCKS: AS INDICATED.
- J. MOUNT ALL WHITE BOARDS AND CHALK BOARDS AT 4'-0" AFF, UNO
- K. TALL STORAGE CABINETS SHALL BE SECURED TO THE WALL TO PREVENT TIPPING
- L. ALL LAB EQUIPMENT IS OFCI
- M. CM SHALL COORDINATE WITH OWNER FOR LOCATIONS OF OFCI PROJECTORS
- N. REFER TO SINK SCHEDULE FOR IDENTIFICATION OF FIXTURES AND ACCESSORIES

SCIENCE CASEWORK KEYNOTES

REPRESENTED BY [n]
APPLIES TO DRAWINGS A7.4.1 - A7.4.n

- 1 RUBBER BASE
- 2 KNEE SPACE
- 3 BACK PANEL
- 4 END PANEL
- 5 SLIDING GLASS DOORS
- 6 FILLER PANEL
- 7 LOCK
- 8 FUME HOOD SHROUD, EXTEND TO CEILING
- 9 UMBILICAL; SEE DETAIL n/A7.4.X
- 10 WALL SHELVING; SEE DETAIL n/A7.4.X
- 11 DRYING RACK; SEE DETAIL n/A7.4.X
- 12 ADJUSTABLE REAGENT SHELVING
- 13 REAGENT SHELVING; SEE DETAIL n/A7.4.X
- 14 ELECTRICAL RACEWAY

Dobo Hall Renovation - Package A

SCO PROJECT NO. 18-19798-01A

UNC Wilmington

4978 CAHILL DR, WILMINGTON, NC 28403

PROJECT NO.	DATE
580999	MARCH 27, 2019
REVISIONS	
DATE	DESCRIPTION

ENLARGED LAB
PLANS AND
ELEVATIONS

A7.4.5

PROGRESS
PRINT NOT FOR
CONSTRUCTION



MOSELEYARCHITECTS

911 N. WEST STREET, SUITE 205 RALEIGH, NORTH CAROLINA 27603
PHONE (919) 845-0091
MOSELEYARCHITECTS.COM